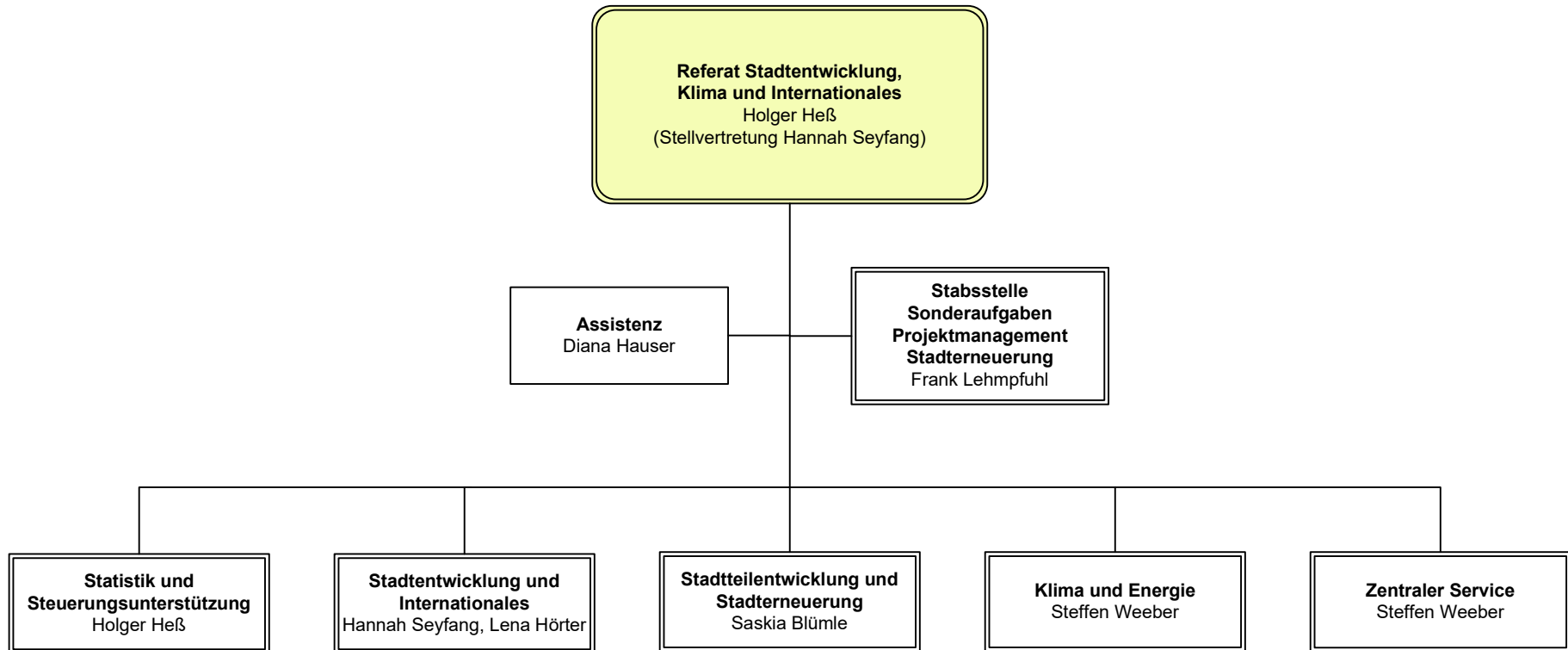


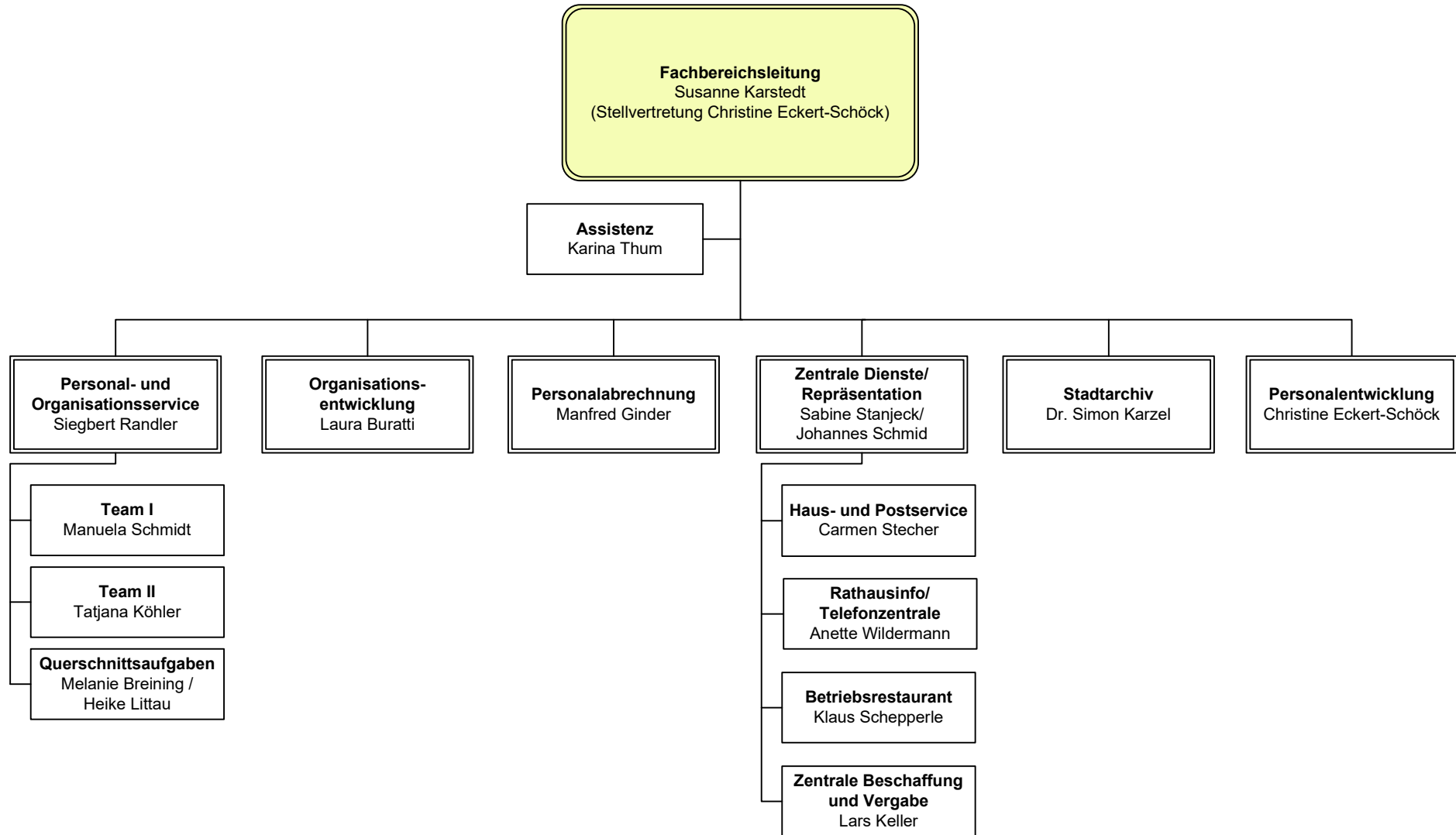


# Referat Stadtentwicklung, Klima und Internationales



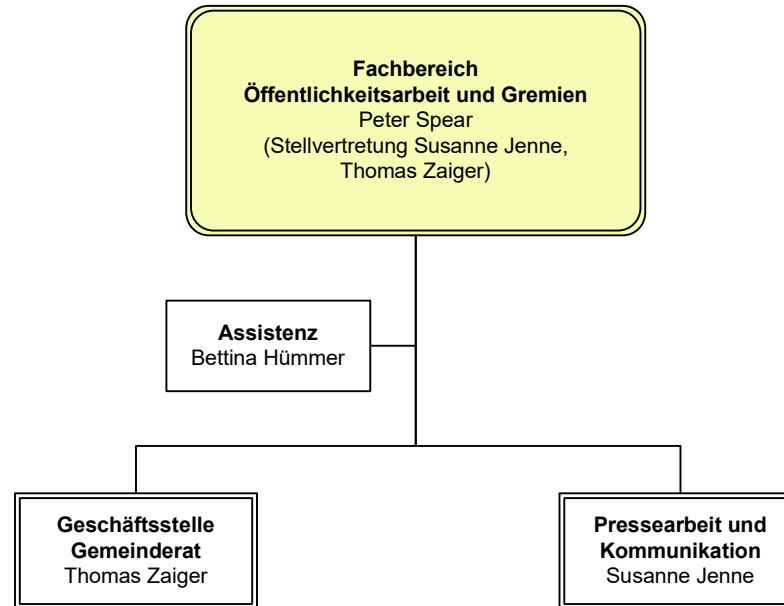


## Fachbereich Organisation und Personal (FB 10)



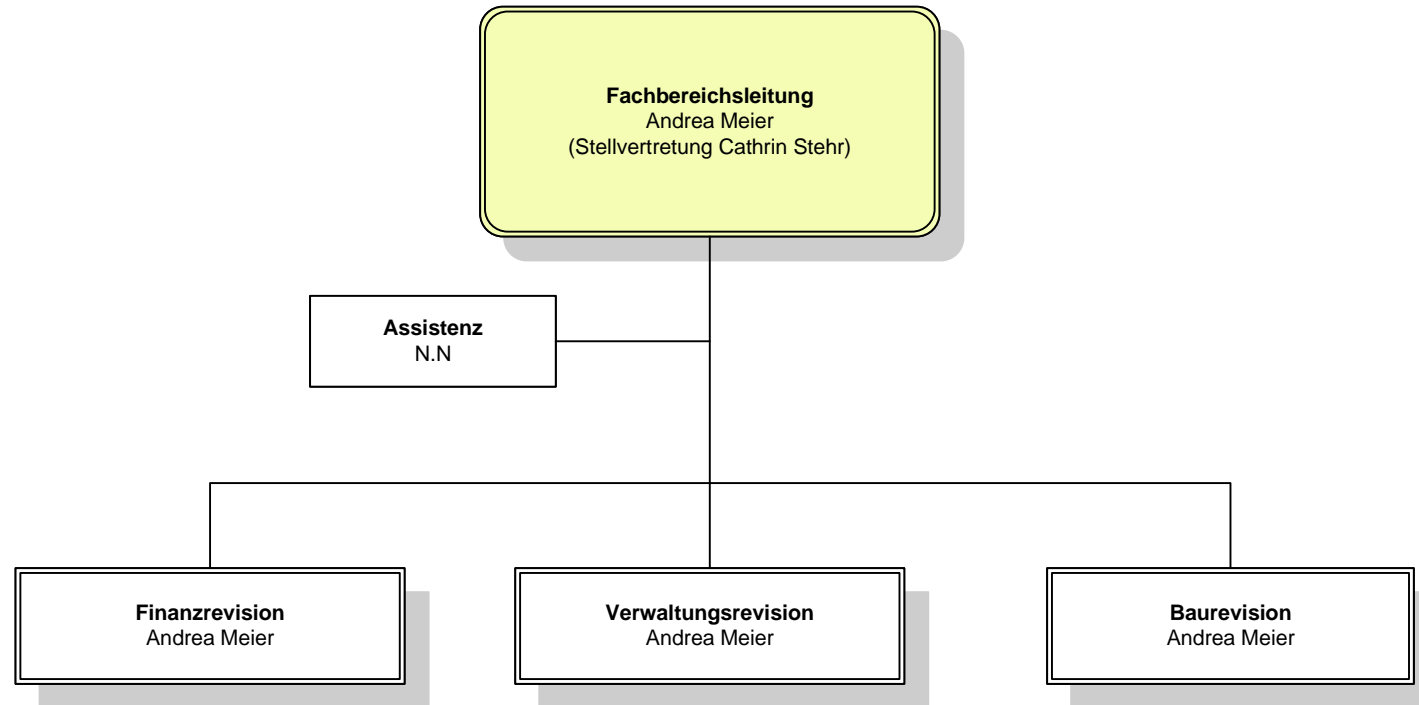


## Fachbereich Öffentlichkeitsarbeit und Gremien (FB 13)



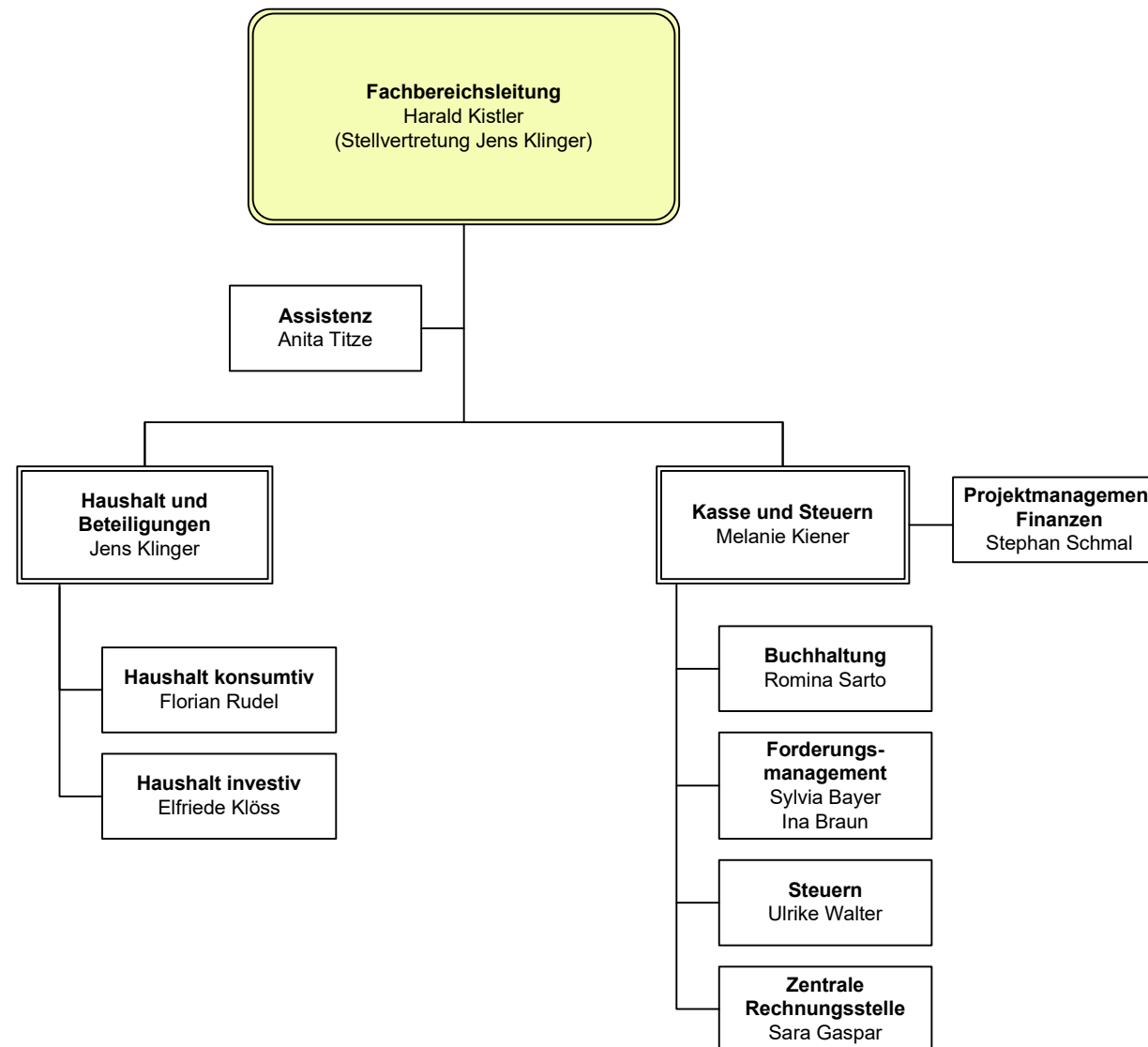


## Fachbereich Revision (FB 14)



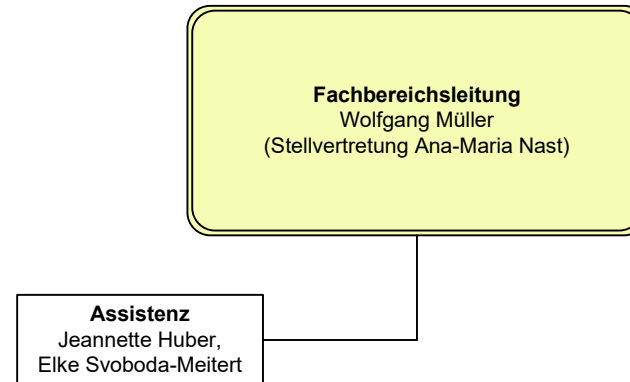


## Fachbereich Finanzen (FB 20)





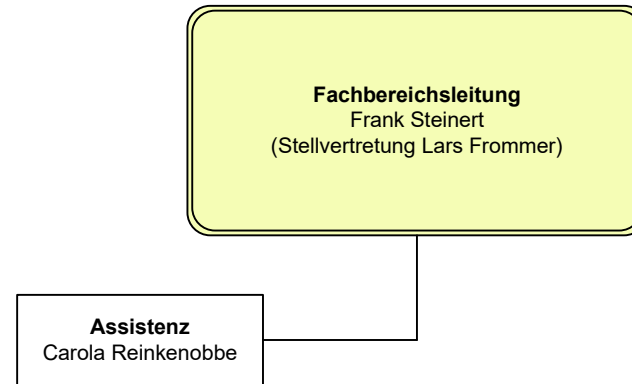
## Fachbereich Recht (FB 30)





LUDWIGSBURG

## Fachbereich Wirtschaftsförderung (FB 80)





LUDWIGSBURG

# Eigenbetrieb Tourismus & Events Ludwigsburg

